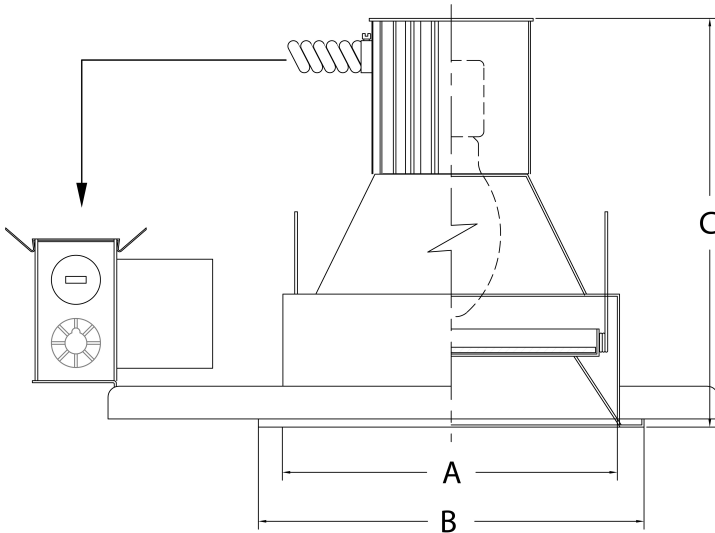


# SPECIFICATION SERIES

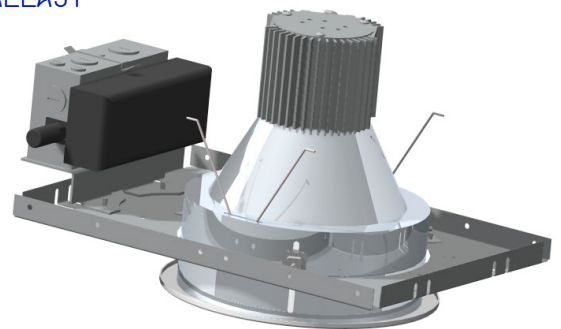
PROJECT \_\_\_\_\_  
 TYPE \_\_\_\_\_

# 8" RECESSED HID MP-LENSLIGHT



## FEATURES:

- LOW IRIDESCENT REFLECTOR
- HEAVY EXTRUDED ALUMINUM HEAT SINK
- GALVANIZED STEEL FRAME
- SUITABLE FOR THROUGH BRANCH CIRCUIT WIRING
- FACTORY PRE-WIRED FOR EASY INSTALLATION
- INSULATION DETECTOR
- UL LISTED UNIVERSAL VOLTAGE ELECTRONIC BALLAST



	A	B	C	LENGTH	WIDTH	CUT OUT
INCH	7.375	8.50	10.00	14.00	11.75	8.00
MM	187.33	215.90	254.00	355.60	298.45	203.20

## ORDER INFORMATION:

SERIES	LAMP	VOLTS	REFLECTOR	TRIM	COLOR	LENS	OPTION	OPTION
SP-VOML8	50W-MP	120/277	CL	CLW	MTL	CGL	QRS	CP
	70W-MP		CWW	MWT	WHT	C73	F	WET
	100W-MP			BMB	BLK	FNL		
	150W-MP				BRZ			

## OPTIONS:

CL	CLEAR	MTL	BRUSHED/POLISHED ALUMINUM DOOR
CWW	CLEAR WALL WASH	WHT	WHITE POWDER COAT DOOR
CLW	CLEAR WHITE TRIM	BLK	BLACK POWDER COAT DOOR
MWT	MATTE WHITE TRIM	BRZ	BRONZE POWDER COAT DOOR
BMB	BLACK BAFFLE TRIM	F	FUSE
CGL	CLEAR GLASS LENS*	QRS	HOT / COLD RE-STRIKE*
C73	CORNING PATTERN 73 LENS	CP	CHICAGO PLENUM*
FNL	FRESNEL LENS	WET	UL WET LOCATION*

\* PLEASE CONSULT FACTORY

LIGHT ONE, INC. P.O. BOX 389-PLAINFIELD, IL 60544 • TEL:773-7478100 • FAX:773-747-8778

[WWW.LIGHTONEINC.COM](http://WWW.LIGHTONEINC.COM)